



Accuracy Pro

Manual multi-position measuring instrument for mechanical watches



Measurement

Rate accuracy:

- Range: ± 1000 s/d
- Resolution: 0.1 s/d
- Accuracy: ± 0.1 s/d

Amplitude

- Range: 70 to 360°
- Resolution: 1°
- Accuracy: $\pm 1^\circ$
- Lift angle: 10 to 90°

Beat error:

- Resolution: 0.1 ms
- Accuracy: ± 0.1 ms

Frequency:

- Automatic detection of common beating frequencies: 7'200 to 72'000 b/h
- Manual entry of any other custom values
- Swiss anchor & coaxial escapements

Technology XMOS

Processor:

- Audio Class 2 Asynchronous USB
- High-frequency TCXO master clock
- USB Plug-and-play
- Cross-platform (Windows, iOS)

Features:

- Automatic or manual gain control
- Integrated 3-axis accelerometer
- Automatic recognition of the 6 main positions

Device

Housing

- Black anodized aluminum body
- Soft-touch coatings
- Zero-backlash 45° positioning
- Smart rubber holder for heavy watches
- Interface: USB type-C
- USB cable type-C to type-A included
- Dimensions: 120x140x170 mm (WxHxD)
- Weight: 960 g



Accuracy Pro

Manual multi-position measuring instrument for mechanical watches

Software



Windows Pro App:

- Multi-sensors management for parallel measurement
- Local or network database for results and measurement parameters
- PDF and CSV exports
- Tactile and responsive UI

Parameters:

- Integration time: 2 s to 240 s
- Stabilization time: 0 s to 60 s
- Measurement time: 30 s to ∞
- Warning display for out-of-range results

OS requirements:

- Windows 10, release 1709 and later
- iOS 13 and later

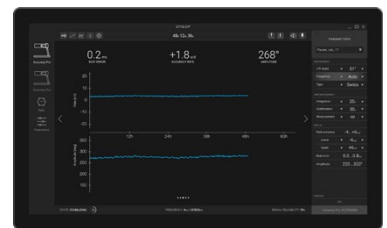
Displays



Scope



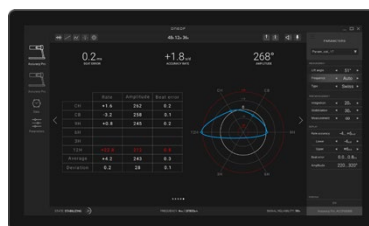
Diagram



Graph



Dispersion



Tabular and radar chart